

November 2023



# What's Happening

As November begins many people are beginning to consider their end of year charitable giving. Please consider making a tax deductible contribution to Bridges' annual Sponsor-A-Match campaign. These funds support recruitment efforts, volunteer screening, ongoing match support, large group events, and operating costs. The program is completely funded through donations, grants and fundraising events. Any and all contributions are greatly appreciated.

Checks can be mailed to P.O. Box 131, Osage IA 50461.

Interested in becoming a mentor? See below for information on an upcoming new mentor training. Mentor one child, change two lives.

## Reminder

**Mentors, Don't Forget!**

**Match Activity Logs are due monthly**

Logs need to include the date(s) of meeting, length of time, description of activities. Fill out the [web form](#), or email to Nicole at: [mcbridgesmentoringprogram.com](mailto:mcbridgesmentoringprogram.com)

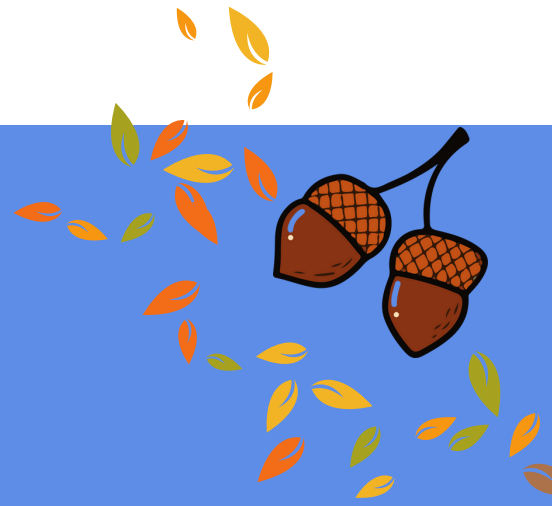


**Bridges Mentoring Program**

November 2023



# Updates



**Do you have 1 hour  
a week to spend  
with a child?**



**VOLUNTEERS NEEDED**

We have youth from Osage, Riceville and St. Ansgar schools waiting to be matched with caring adults

Visit:  
[bridgesmentoringprogram.com](https://bridgesmentoringprogram.com)  
to submit a volunteer application under the "Get Involved" tab



**New Mentor Training  
November 10th, 2023  
1:00pm-3:00pm**

**Our Saviors Lutheran Church, Fireside Room**

This training is open to anyone interested in becoming a Bridges mentor. Find out what it means to be a mentor, the commitment involved, mentoring best practices, and have your questions answered. Attendance does not equal a commitment, but will jump start the onboarding process for those that choose to proceed with becoming a volunteer. No registration required.

You can now support Bridges with purchases you are already making! Simply cut out the UPC's from any Our Family brand products (sold at Randy's Neighborhood Market) and turn them into Bridges Mentoring Program. Drop off at our office located at Our Saviors Lutheran Church or mail to P.O. Box 131 Osage, IA 50461. More drop off locations to come.

**SNIP AND  
SAVE**  
FOR YOUR  
LOCAL NON-PROFITS!



\$25 donated for every 500  
Our Family® labels submitted



**Bridges Mentoring Program**